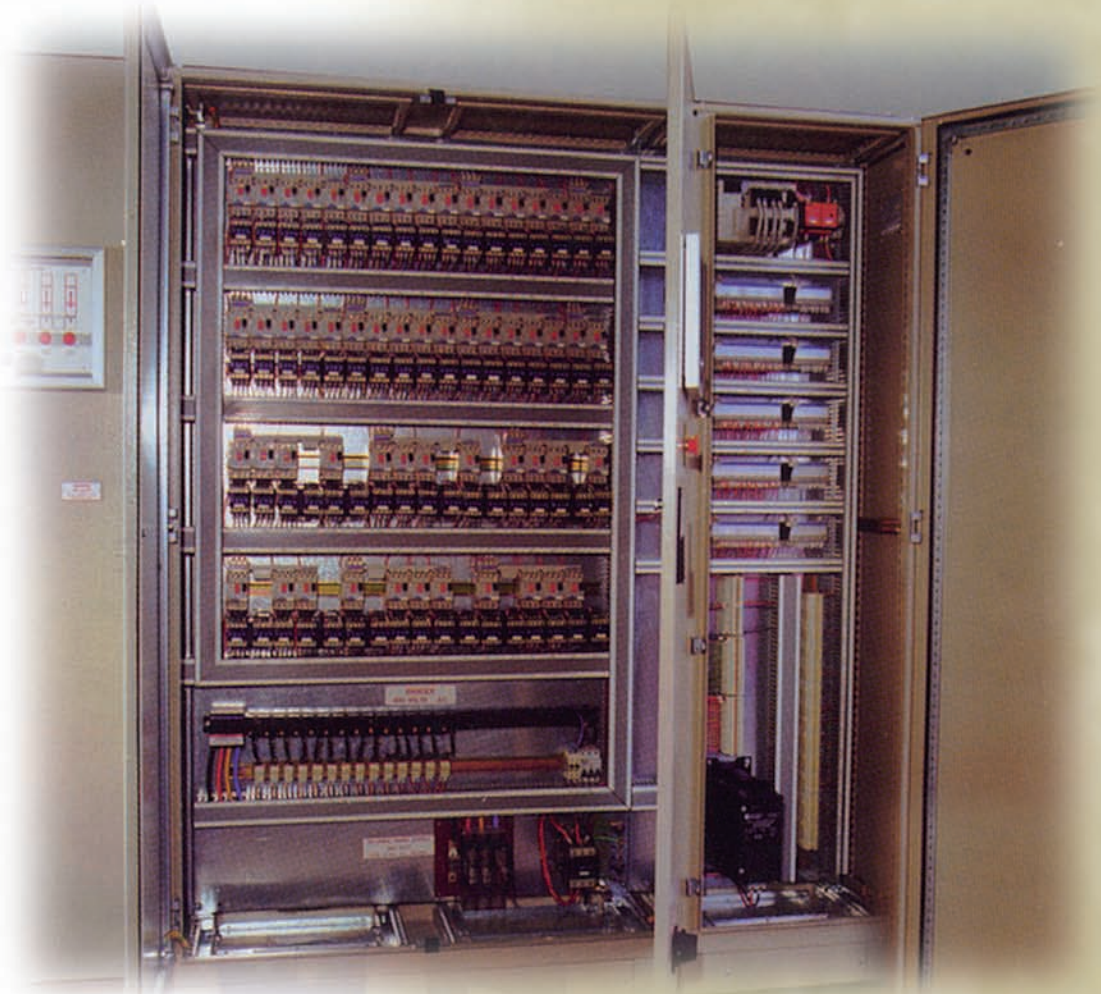


## GS-AC2000 Auto Control Centre

# GSAC2000



**AUTOCONTROL 2000** is a software driven electronic control centre which processes feedback from sensors throughout the Gateway mattress assembly line to manage the sequencing and flow rates of the infeed and outfeed systems. Mattresses are always in the right place at the right time to ensure the Mattress Master works at maximum efficiency.

This sophisticated control centre can isolate product by size and send it to a specific line. This means, for example, that single and double mattresses can be automatically sorted and sent to packaging machines fitted with narrow or wide film rolls – saving wastage.

Gateway has designed, built and programmed systems to coordinate up to 10 lines with unerring accuracy.

The unit is safely housed in a heavy gauge steel cabinet that opens fully for easy service.

In common with all Gateway mattress machinery equipment, our **AUTOCONTROL 2000** incorporates the benefits of our specialist expertise and is supported by our highly skilled and experienced team.



**GLOBAL SYSTEMS GROUP®**  
*Creative Companies. Endless Possibilities.*